

# You belong.



Christ Church Charlotte  
CHRIST EPISCOPAL CHURCH

*What is God calling you into?*



*In Christ we, though many, form one body,  
and each member belongs to all the others.  
We have different gifts, according to  
the grace given to each of us.*

- ROMANS 12:5-6

Dear Friends,

Please consider this book your personal invitation to deepen your connection with God and with us here at Christ Church. Whether you are new to Christ Church or have been here your whole life, this season offers us a unique opportunity to reimagine our life together in faith and hope.

We all need a place to belong, where our God-given gifts are affirmed and nurtured. As you discern where God might be calling you, think about these questions: What brings you joy? How have you experienced kindness? What gives you hope? Where do you find peace?

Whatever your answers, we hope they will lead you into a deeper life with God as you bless our spiritual home and the world with your gifts. We are grateful for your presence among us, and eagerly anticipate all that we can do together to be Christ's Church in the world.

Love and blessings,  
The Reverend Chip Edens  
Rector, Christ Episcopal Church

# Spiritual Practices for all of us

Aligned with our mission to love God, care for each other, and serve the world, we have embraced these six key Christian practices:

WORSHIP & PRAY

DISCOVER & LEARN

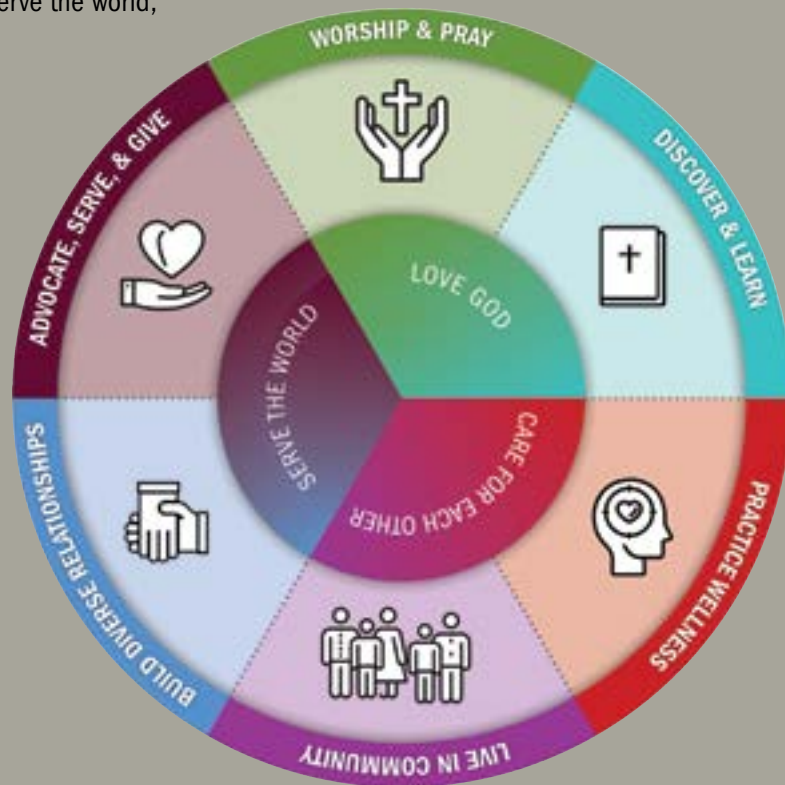
PRACTICE WELLNESS

LIVE IN COMMUNITY

BUILD DIVERSE RELATIONSHIPS

ADVOCATE, SERVE, & GIVE

On the following pages you will find opportunities to explore any or all of these practices as you discern how God might be calling you to participate in the life of Christ Church.





LOVE GOD

# Worship and pray

*Where do you find or experience God in the world?*

*How do worship and prayer help you experience God?*

Do you feel called to share any of these gifts and talents?

- Singing or playing an instrument
- Reading in worship
- Technology
- Preparing the altar for Eucharist

Consider these possibilities for worship and prayer:

- [Attend worship](#)
- [Choir or band \(sing, play, AV support\)](#)
- [Altar guild](#)
- [Readers](#)
- [Acolytes](#)
- [Greeters or ushers](#)
- [Centering prayer group](#)

---

**TO GET CONNECTED OR TO LEARN MORE, VISIT**  
**[WWW.CHRISTCHURCHCHARLOTTE.ORG/YOU-BELONG](http://WWW.CHRISTCHURCHCHARLOTTE.ORG/YOU-BELONG)**

---





LOVE GOD

## Discover and learn

*Who has been your greatest teacher about faith?  
What is one big question you have about God,  
the Episcopal tradition, or your faith?*

Do you love to share time with others in any of these ways?

- Learning
- Listening
- Teaching
- Conversations

Consider attending or leading these opportunities for learning and growth:

- [Bible and book studies](#)
- [Wellness groups](#)
- [Retreats or workshops](#)
- [Pilgrimages](#)
- [Faith Forums](#)

---

**TO GET CONNECTED OR TO LEARN MORE, VISIT**  
**[WWW.CHRISTCHURCHCHARLOTTE.ORG/YOU-BELONG](http://WWW.CHRISTCHURCHCHARLOTTE.ORG/YOU-BELONG)**

---



*Who was your earliest teacher about faith?  
How do you show love and care to children?*

Do any of these activities bring you joy?

- Teaching
- Storytelling
- Crafts
- Rocking babies
- Creating

Consider these ways to nurture children as they discover and learn:

- [Nursery](#)
- [Sunday School](#)
- [Vacation Bible School](#)
- [Christ Church Preschool and Kindergarten \(CCK\)](#)
- [Special events and activities](#)

*Who were the important adults in your life as a teen?  
What do wish you could teach your younger self?*

Do you feel called to share any of these gifts and talents?

- Listening
- Mentoring
- Chaperoning trips
- Praying with others
- Facilitating conversation

Consider these ways to support our youth:

- [High school advisor](#)
- [Middle school advisor](#)
- [Trip chaperone](#)
- [College student ministry](#)

CARE FOR EACH OTHER

# Practice wellness

*How do you know when you are well?  
Are there areas of your life where you  
experience greater wellness than others  
(physical, mental, emotional, spiritual)?*

Do you feel called to share any of these gifts and talents?

- Listening
- Facilitating
- Mindfulness
- Caring for others

Consider these wellness practices:

- [Mindfulness groups](#)
- [Counseling and referral](#)
- [Spiritual practices small groups](#)
- [Faith and Wellness small groups](#)
- [Support groups](#)

---

**TO GET CONNECTED OR TO LEARN MORE, VISIT  
[WWW.CHURCHCHARLOTTE.ORG/YOU-BELONG](http://WWW.CHURCHCHARLOTTE.ORG/YOU-BELONG)**

---





CARE FOR EACH OTHER

# Live in community

*When/where do you feel the most known, loved, understood, and supported?*

*How can you actively or intentionally work to build community among family, friends, coworkers, or church members?*

Would you like to share your gifts of hospitality and care in any of these ways?

- Welcoming
- Event planning
- Photography
- Sharing stories
- Shopping or helping others shop
- Flower ministry
- Care teams

Consider getting involved in these opportunities in our parish:

- [Fellowship events](#)
- [Hospitality committee](#)
- [Greeter team](#)
- [Kitchen volunteers](#)
- [GoodNews Shop](#)
- [Funeral volunteers](#)



SERVE THE WORLD

# Build diverse relationships

*Where do you experience diversity in the world?*

*How are communities strengthened by diverse people and perspectives?*

Do you feel called to share any of these gifts and talents?

- Empathy
- Listening
- Hospitality
- Open-mindedness

Consider these pathways to building diverse relationships:

- [Sacred Ground](#)
- [The Space Between Us](#)
- [Know CLT](#)
- [A Place at the Table](#)
- [Volunteer in the community](#)

---

**TO GET CONNECTED OR TO LEARN MORE, VISIT**  
**[WWW.CHRISTCHURCHCHARLOTTE.ORG/YOU-BELONG](http://WWW.CHRISTCHURCHCHARLOTTE.ORG/YOU-BELONG)**

---





SERVE THE WORLD

# Advocate, serve, and give

*What have you experienced that might equip you to help others?*

*What causes are worthy of your advocacy, service, and generosity?*

Do you feel called to share any of these gifts and talents?

- Compassion
- Generosity
- Helping
- Public speaking
- Mentoring
- Serving

Consider these invitations to advocate, serve, and give:

- [Moveable Volunteer Possibilities \(MVPs\)](#)
- [Teach classes or workshops](#)
- Serve on committees/commissions
- [Make a pledge or financial contribution](#)
- [Volunteer to cook, serve, build, etc.](#)
- [Donate food or supplies](#)

# Christ Church Charlotte

CHRIST EPISCOPAL CHURCH

1412 Providence Road, Charlotte, NC 28207



To get connected or to learn more,  
visit [www.christchurchcharlotte.org/you-belong](http://www.christchurchcharlotte.org/you-belong)



Christ Church Charlotte



@ChristChurchCLT



Christ Church Charlotte App  
(iTunes, Google Play, Amazon)